



# PURPLE LINE NEWSLETTER

MAY 2025



- Construction Updates
- Business Spotlight: Megamart Riverdale
- Grant Opportunities

## From Ray Biggs, II Purple Line Senior Project Director, MTA



Ray Biggs, II, Senior Project Director, MTA

May is National Bike Month and this past week we celebrated Bike to Work Week. Bicycling and transit go hand in hand with bikes providing a vital solution for bridging the first and last-mile connections from home to transit stops to a rider's ultimate destination. The Purple Line light rail vehicles (LRVs) are equipped with bike racks and have low floors to easily facilitate "rolling on" with a bike. Purple Line LRVs are level

with the platform minimizing steps or gaps, making it easier to board, especially for passengers with bicycles. The Purple Line's Ride Safe campaign reminds everyone to "Be particular. Ride perpendicular!" when crossing tracks to avoid accidents.

As part of the Purple Line construction, we're also adding more than 10 miles of bike lanes to make biking around the community safer and easier. This is just one of the ways

the Purple Line is improving accessibility and connecting communities.

The Purple Line teams continue to advance the project—it's amazing how construction is shaping up right in our neighborhoods. We're now more than 78% done—almost half the track is laid, and all 21 stations are under construction. Check out this month's progress photos below for a look at this transformation.

I was grateful for the opportunity to connect at the most recent round of Community Advisory Team (CAT) meetings. If you couldn't make it, no worries—check out the recordings and materials on our website. And don't miss our May Business Spotlight on Megamart in Riverdale, a beloved local grocery store just a few steps from the future Riverdale Park-Kenilworth Station. A reminder that the Maryland Department of Transportation's (MDOT) Purple Line Small Business Grant program opens for new applications on June 2. This month, more than one hundred businesses along the alignment were awarded grants. Find more information and a link to the MDOT application on our [website here](#).

Have questions? Reach out to our Outreach Team anytime at [outreach@purplelinemd.com](mailto:outreach@purplelinemd.com), call us at 443-451-3706 (or 443-451-3705 for Spanish), or follow us on social media @purplelinemd.

Ray Biggs, II

# Construction Updates:

## Montgomery County:

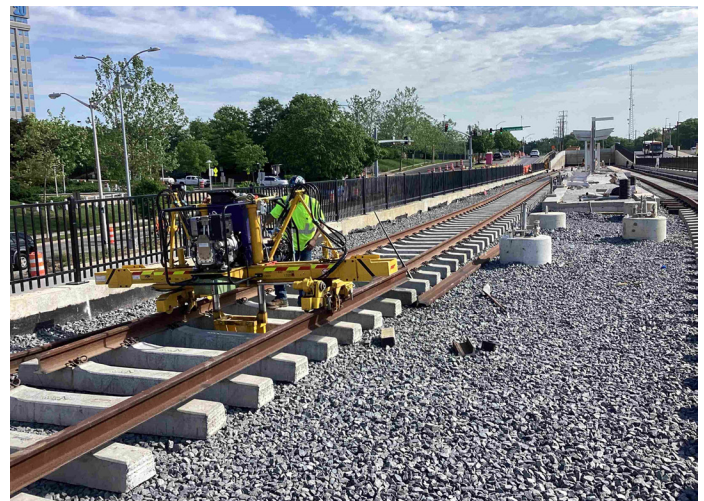


Clockwise from top left:

1. The light rail bridge (left) and Capital Crescent Trail bridge (right) over Rock Creek and the Rock Creek Trail. The new trail bridge's concrete deck was placed last month.
2. The stair and escalator canopy for the new WMATA mezzanine at the Paul S. Sarbanes Transit Center in Silver Spring. The new mezzanine will improve access between the Metro Red Line platform and the Purple Line.
3. The Lyttonsville Station and Lyttonsville Place Bridge. The bridge will cross the Purple Line alignment and Capital Crescent Trail.
4. The Silver Spring Library Station underneath the Brigadier General Charles E. McGee Library. Both sets of embedded track are installed through the station.

# Construction Updates:

## Prince George's County:



Clockwise from top left:

1. Track installation through the Baltimore-Washington Parkway underpasses alongside Riverdale Road is complete.
2. Track is being installed through the Riverdale Park-Kenilworth station on the Kenilworth Avenue Flyover in Riverdale.
3. Crews operate a rail threader near the New Carrollton Station. A rail threader lifts and guides the rails into place so they can be fastened to the track structure.
4. Embedded track is installed across the southbound lanes of Baltimore Avenue (Route 1) in College Park. Work continues on track across the northbound lanes, and Baltimore Avenue remains one lane in either direction.

# Business Spotlight: Megamart Riverdale

5801 Riverdale Rd #100, Riverdale Park, MD 20737  
Ph. (301) 277-8580 | Website: [megamartsupermarket.com](http://megamartsupermarket.com)  
Facebook, Instagram: @megamartsupermarket  
Open daily 7:30 a.m. to 9:00 p.m.

Megamart Riverdale opened its doors in 2009, offering a wide range of Mexican and Central American grocery products. They quickly became the go-to source for groceries tailored to the Latino community.

Since then, the increase of diverse communities in the area enabled the local chain to expand its selection.

“As our community flourished, we recognized a growing interest in Venezuelan, African, and Middle Eastern products,” said Juan Castellon, general manager of the Riverdale location. “We embraced this opportunity and expanded our offerings to satisfy these new demands.”

With 11 branches across Maryland and Virginia, Megamart specializes in unique products that their customers say they’ve not found locally at larger chain stores. The grocer also offers a wide produce section, a fresh seafood market and a free home delivery option on orders of \$50 or more.

“The most rewarding aspect of serving this community is witnessing the incredible diversity firsthand,” Castellon said. “It is inspiring to see these varied cultures come together here.”

The Riverdale branch is located a short walk from the Purple Line Riverdale Park-Kenilworth Station. It’s one of three Megamart locations along the Purple Line alignment, including in Adelphi and Takoma. Castellon anticipates the Purple Line bringing new customers to the store and making it easier for existing customers to access the store.



## Other Megamart locations on the Purple Line:

**Megamart Adelphi**  
2400 University Blvd E.  
Adelphi, MD 20783

**Purple Line station:**  
Adelphi Road-UMGC-UMD

**Megamart Takoma**  
1101 University Blvd E.  
Takoma Park, MD 20912

**Purple Line station:**  
Takoma - Langley



# Grant Opportunities: Maryland Department of Transportation's Purple Line Small Business Grant Program

Maryland Department of Transportation (MDOT) has announced the first round of recipients for the Purple Line Small Business Grant Program, which MDOT launched in February. This grant program aims to support small businesses along the Purple Line alignment most directly impacted by construction of this critical light rail line. The funding will help local business owners sustain operations, preserve jobs and expand services. During the first round of applications, more than 450 submissions were received from various businesses. After a thorough and competitive selection process, more than 100 eligible businesses in Prince George's and Montgomery counties were selected based on their demonstrated need and proximity to the priority impact areas.

- **Grant awards** for the first phase ranged from \$1,000 to \$40,000, for a total of \$1 million.

- **The four-year program** will invest \$4 million in eligible businesses along the Purple Line corridor.
- **Businesses are encouraged to reapply** if they were not awarded during the first phase of funding.
- **Businesses who have not applied** are also encouraged to submit an application in the next funding cycle, which opens **June 2**.
- **Applications** for the second round of funding are due by **June 27, 2025**.

Program details, full eligibility requirements and a link to the grant application (available in multiple languages) can be found on our [Small Business Grant page](#). Businesses needing to reach Purple Line Business Engagement can email the team at [business@purplelinemd.com](mailto:business@purplelinemd.com).

---

## Purple Line Transit Partners' Beyond the Rails Community Grant Program

Community groups working to make the Purple Line corridor a better place to live, work and play are invited to apply for a Beyond the Rails grant by the fast-approaching May 30 application deadline. Purple Line Transit Partners (PLTP), the State of Maryland's private-sector partner on the project, is the sole funder and administrator of the community grant program.



*New Carrollton Mayor Katrina Dodro and other community leaders accept a grant check for a "food forest" that will grow fruit trees and other edible plants for local residents to harvest. (February 2025)*

- **Eligibility** – Programs that improve communities along the Purple Line corridor
- **Deadline** – May 30, 2025
- **Amount** – \$1,000 to \$3,000 per year
- **Selection/Disbursement** – Summer 2025
- **Next Grant Cycle Deadline** – November 28, 2025 (applications accepted at any time)

Since PLTP debuted the program in late 2023, 20 grants have been awarded to a broad spectrum of causes, ranging from food banks serving lower-income populations to parent-teacher associations for student tutoring programs to environmental initiatives like local clean-ups and more.

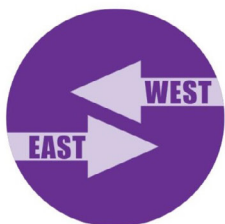
Applying is as simple as completing this [two-page application form](#). Should you have any questions about the Beyond the Rails community grant program or how to complete the application, please contact [grants@purplelinepartners.com](mailto:grants@purplelinepartners.com). The deadline to Apply for Beyond the Rails Community Grants is May 30.

# Purple Line by the Numbers



**All 21 Stations Under Construction**

**17 Miles of Sidewalk Installed**



**50% of Track Installed**

---

**Thank you for subscribing to the Purple Line newsletter.**

Stay connected through our social media channels and our website, [purplelinemd.com](http://purplelinemd.com).